

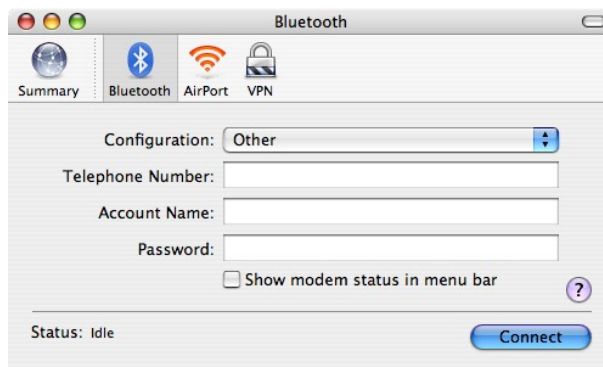
Setting Up Your a Virtual Private Network (VPN)

1. Open up Internet Connect



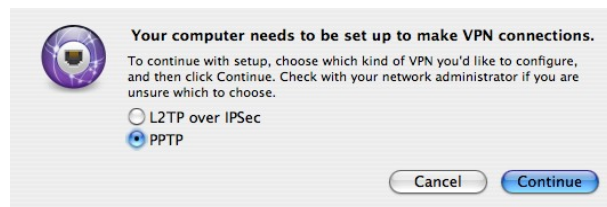
Internet Connect is located in the *Applications* folder on your hard disk

2. Click on VPN

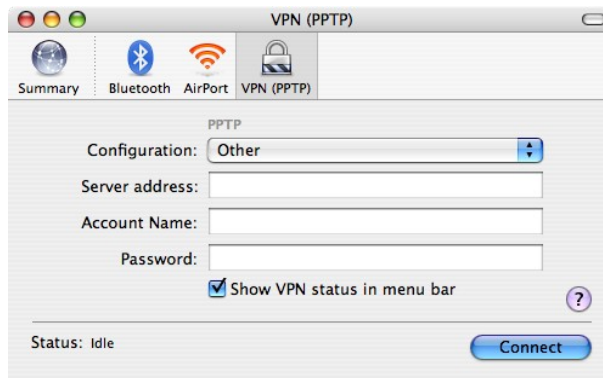


Click the *VPN* icon signified by a padlock

3. Choose PPTP as the Connection Type



Choose PPTP as the connection type and click continue.



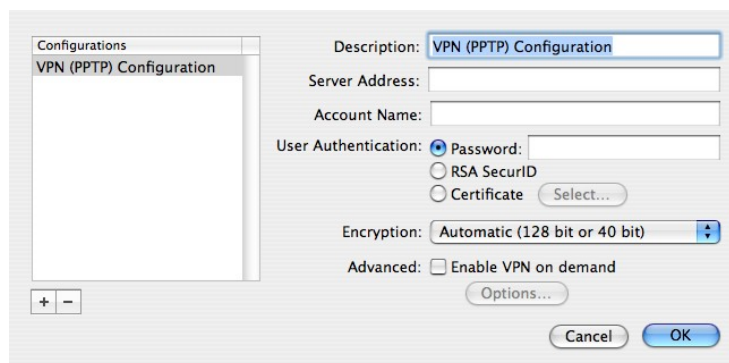
You will see the *VPN (PPTP)* icon

4. Choose 'Edit Configurations...' from the Drop Down Menu



Choose *Edit Configurations...* from the Drop Down Menu

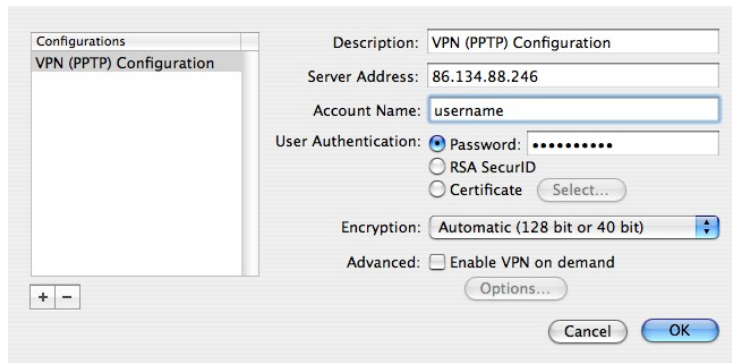
5. Edit the Settings Sheet



Settings Sheet

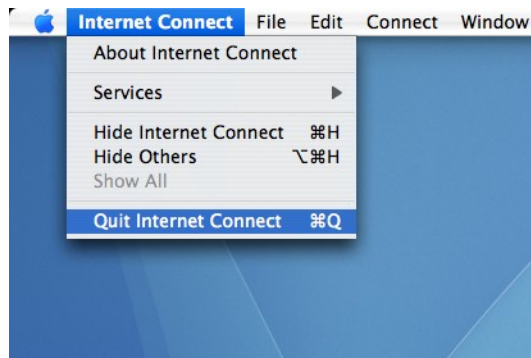
Description	: Anything – Default is Fine
Server Address	: 86.134.88.246
Account Name	: Your username for ECAServer
User Authentication	: Password: Your password for ECAServer
Encryption	: Automatic (128 bit or 40 bit)
Advanced	: <input type="checkbox"/> Enable VPN on demand (Clear)

6. Click OK to Close the Sheet



Click *OK* to Close the Sheet

7. Quit 'Internet Connect'



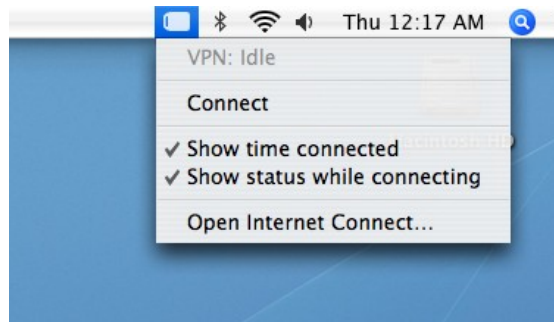
Quit Internet Connect

Connecting & Disconnecting the VPN

Before you can use resources on the ECA network, such as files you must connect the VPN

Connecting the VPN

1. Click 'Connect' from the VPN Menu Bar Item



Click *Connect*

Once you are connected you can treat your local computer as if it were directly wired into the ECA network. You may connect to the ECA Server, with the address *ecaserver* where you may access network file shares or connect to your machine using Apple Remote Desktop (or VNC if available).

Note: If you want to connect to a computer, for example *alpha* and a computer with the same name exists in your home/local network simply add *.gateway.2wire.net* to the name. For example, *alpha* becomes *alpha.gateway.2wire.net* – this domain name is reserved and is private to the VPN and is not routed over the public internet. You will be unable to connect to these items when the VPN is disconnected.

Disconnecting the VPN

1. Click 'Disconnect' from the VPN Menu Bar Item



Click *Disconnect*